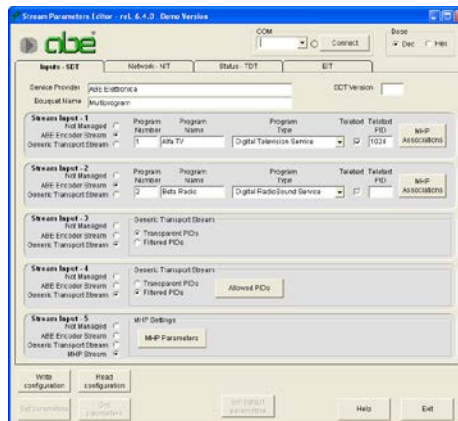


TRANSPORT STREAM MULTIPLEXER/REMULTIPLEXER SERIES

The high quality, professional and cost-effective solution



DVB[®]
Digital Video
Broadcasting



The MUX series Transport Stream Multiplexer / Re-Multiplexer series is a high quality, professional, flexible and cost-effective solution.

The Multiplexer combines the output of different Encoders, producing a multi-program Transport Stream.

The MUX series can also "re-multiplex", modifying existing Transport Streams, adding or deleting programs and/or data (for example MHP data - the Multimedia Home Platform); it also includes and/or modifies tables (for example NIT - Network Information Table - SDT, TDT, EIT, etc.).

The configuration software is supplied with the product.

Features

- Up to 8 ASI Transport Stream inputs (Standard Version).
- Automatic Transport Stream adaptation (with PCR time re-stamping);
- NIT (Network Information Table) and SDT (Service Description Table) insertion and / or modification;

- EIT (Event Information Table) and TDT (Time and Data Table) insertion;
- PID Filtering;
- MHP (Multimedia Home Platform) support (associate carousels and other MHP tables to programs);
- Configuration and management software (PC based);
- Dynamic EIT option with specific management software (PC based);
- DVB-T2 Gateway or DVB-T MIP Inserter options;
- GPS-GNSS locked Hi Stability reference oscillator;
- BISS 1/E encryption option;
- Local Control from the front panel, easy and friendly, with LCD graphic display LCD and keypad
- Ethernet 10/100 Base-T (RJ45 connector - SNMP, web server, e-mail client) remote control interface
- Stand Alone Unit 1U high.



Multiplexer

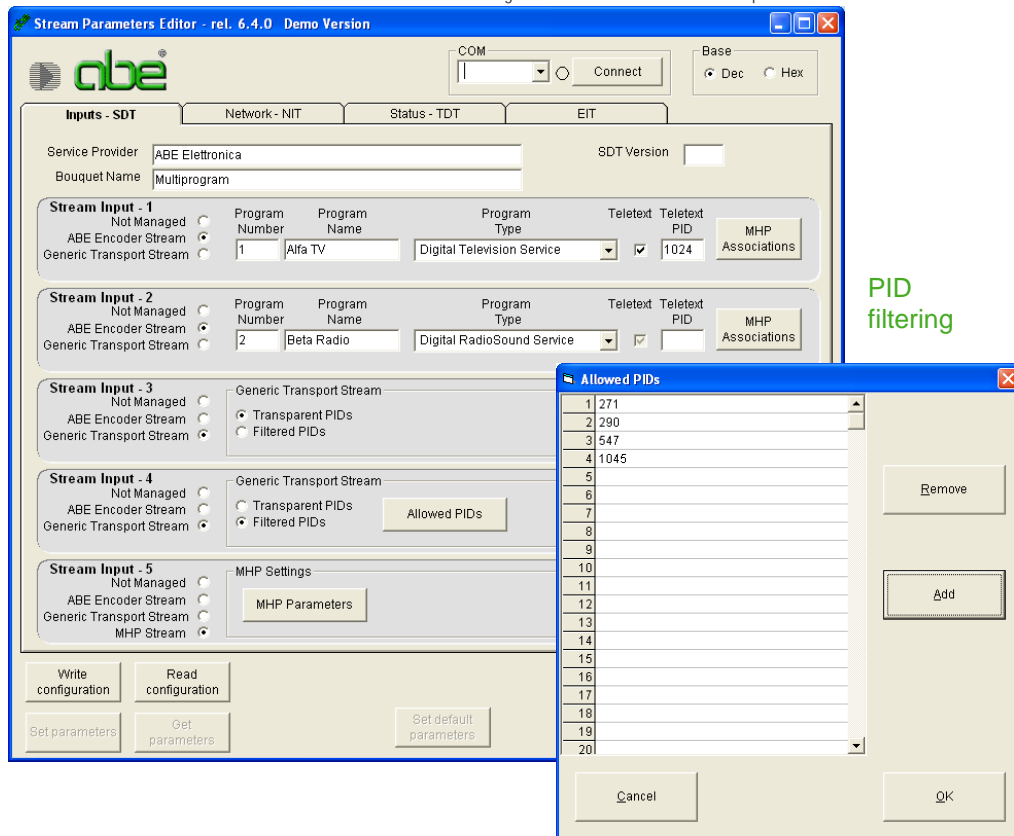
MULTIPLEXING

Reference standard:	EN 300468
Inputs:	1 to 8 ASI – Asynchronous Serial Interface – Transport Stream (according to the model)
Outputs:	Double ASI – Asynchronous Serial Interface – Transport Stream Option: T.S. over IP (GBE)
Input / output connector and interface:	BNC - female - 75Ω
Time re-stamping (PCR update)	Yes
Output bit-rate clock frequency stability:	≥ 2ppm
Tables:	Insertion / Modification of NIT, SDT, TDT, EIT
PID Filtering:	Up to 128 PIDs per each input Transport Stream
MHP support:	Association to programs
Setting:	Full control via RS232 port with specific management software (PC based Windows 2000, Windows XP compatible)

OPTIONAL FEATURES:

Encryption option:	BISS 1/E
<i>Dynamic EIT support with specific management software (PC based Windows 2000, Windows XP compatible)</i>	

Microsoft Windows 2000 and Windows XP are registered trademarks of Microsoft Corporation



Stream Parameters Editor - rel. 6.4.0 - Demo Version

COM: [] Connect Base: Dec Hex

Inputs - SDT | Network - NIT | Status - TDT | EIT

Service Provider: ABE Elettronica SDT Version: []
Bouquet Name: Multiprogram

Stream Input - 1
 Not Managed
 ABE Encoder Stream
 Generic Transport Stream
 Program Number: 1 Program Name: Alfa TV Program Type: Digital Television Service Teletext PID: 1024 MHP Associations: []

Stream Input - 2
 Not Managed
 ABE Encoder Stream
 Generic Transport Stream
 Program Number: 2 Program Name: Beta Radio Program Type: Digital RadioSound Service Teletext PID: [] MHP Associations: []

Stream Input - 3
 Not Managed
 ABE Encoder Stream
 Generic Transport Stream
 Transparent PIDs
 Filtered PIDs

Stream Input - 4
 Not Managed
 ABE Encoder Stream
 Generic Transport Stream
 Transparent PIDs
 Filtered PIDs Allowed PIDs: []

Stream Input - 5
 Not Managed
 ABE Encoder Stream
 Generic Transport Stream
 MHP Stream
 MHP Settings: [] MHP Parameters: []

Write configuration | Read configuration | Set parameters | Get parameters | Set default parameters

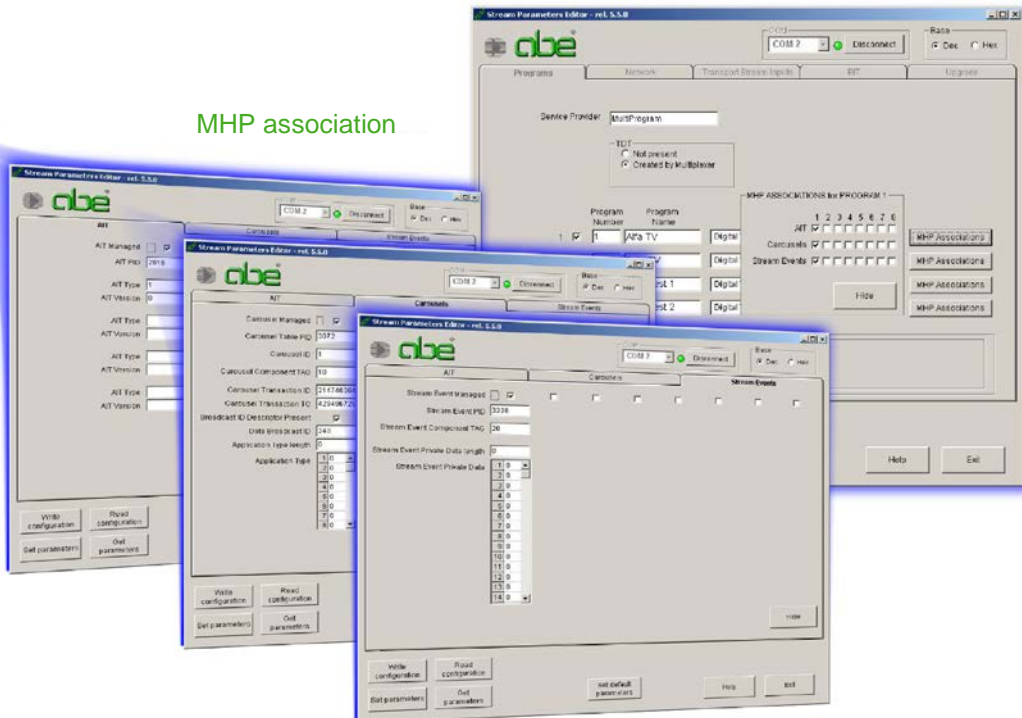
Allowed PIDs

1	271
2	290
3	547
4	1045
5	
6	
7	
8	
9	
10	
11	
12	
13	
14	
15	
16	
17	
18	
19	
20	

Remove | Add | Cancel | OK

PID filtering

MHP association

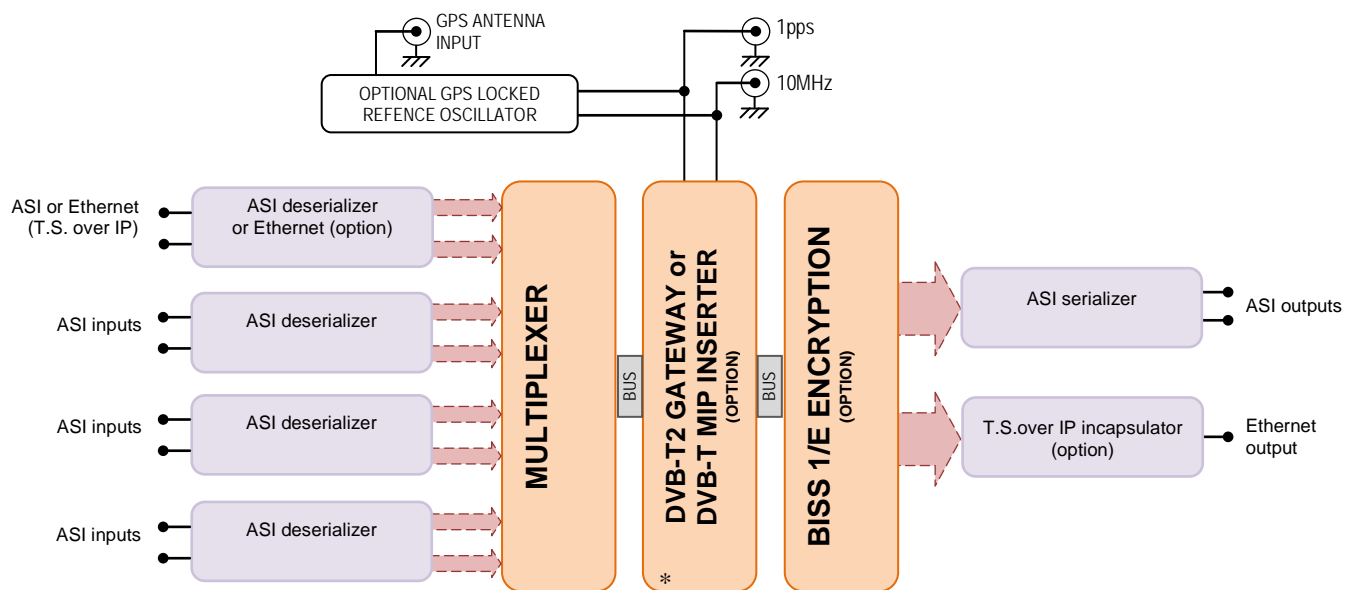


GENERAL CHARACTERISTICS

Power supply:	220Vac ± 10% 50/60 Hz (Different power supplies and tolerances available on request)
Remote control interface options:	RS232; Ethernet 10/100 Base-T (SNMP and web server support)
Housing:	Rack drawer 19" 1U
Operating temperature range:	0 to 45° C.



MUX Series Multiplexer block diagram



* For technical specification and detailed description, please see the documentation of DVB-T2 Gateway and MIP 1000 - MIP Inserter - SFN Adapter

Available models in the MUX Series

Model	Number of ASI deserializer	Number of ASI inputs
MUX 1002	1	2
MUX 1004	2	4
MUX 1005	3	5
MUX 1008	4	8

